



# Discipline-based Study

## Descriptor

Disciplines are defined by specialist knowledge, theories, concepts, methodology and terminology. They are not the same as Learning Areas. Most Learning Areas encompass many disciplines. Discipline-based Study includes courses at all levels to suit learners regardless of their intended pathways. Discipline-based Study includes content, core concepts and big ideas; enabling deep knowledge and understanding of the content

and the application of what is learned. Learners consider accepted key disciplinary knowledge and apply distinctive ways of thinking, and become increasingly independent learners. They use methodologies specific to the discipline to explore and strengthen their understanding of key concepts and develop deep knowledge, skills and understanding.

## Discipline-based Study courses have three key features that guide teaching and learning



Specialist knowledge



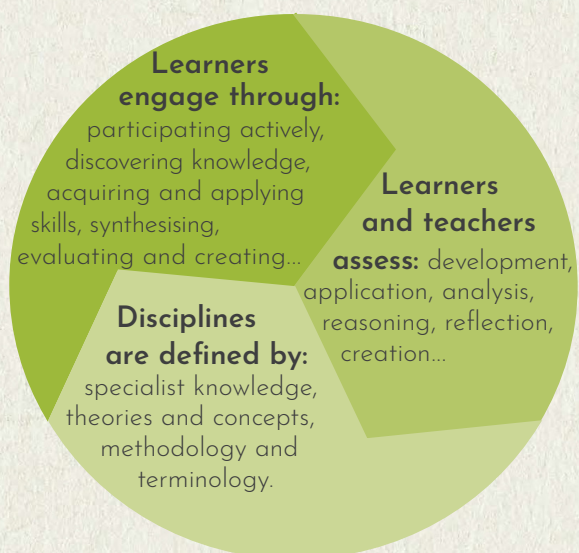
Theories and concepts



Methodology and terminology

## Internal logic

Courses in the tradition of a discipline may have Levels 1 to 4 as appropriate. As learners engage with the three key features of a discipline (specialist knowledge, theories and concepts, and methodology and terminology) they will monitor their own learning and be assessed on their development, application and the depth of their understanding using an interconnected model of learning:



### Specialist knowledge

Learners will engage with a body of accumulated specialist knowledge which refers to the focus of their study and is specific to a discipline.

### Theories and concepts

Learners will utilise theories and concepts that organise the accumulated specialist knowledge effectively. These relationships will be applied to create meaning from and interact with the focus of their study.

### Methodology and terminology

Learners will develop and apply the specialised methods of study designed to meet the particular requirements of a discipline, using specific terminologies or technical language adjusted to the focus of their study.

## Assessment types

The mode, style and frequency of assessment will vary from course to course. Suitable evidence for assessment in Discipline-based Study includes:

Folio	Reflection	Short response	Extended response	Examination
recorded, constructed, written	learning journal, Vlog	representing, speaking, creating, writing	representing, speaking, creating, writing	theory, practical, open book, group