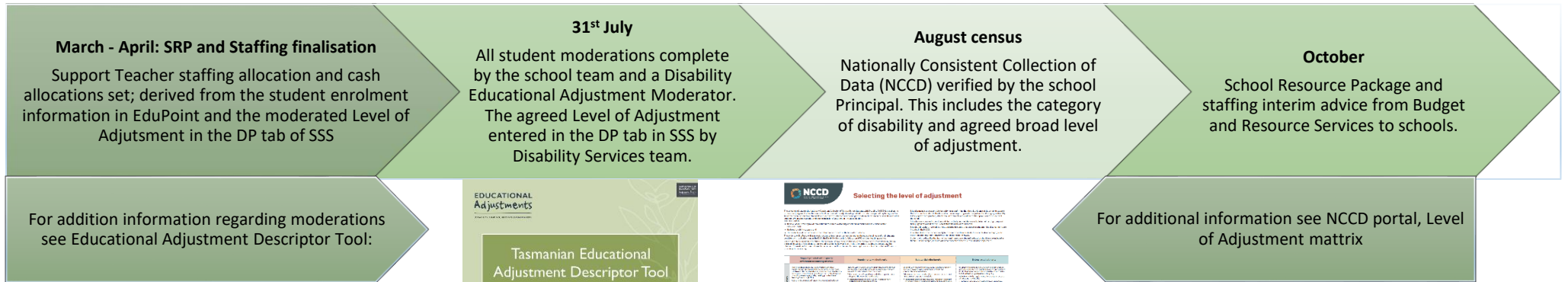
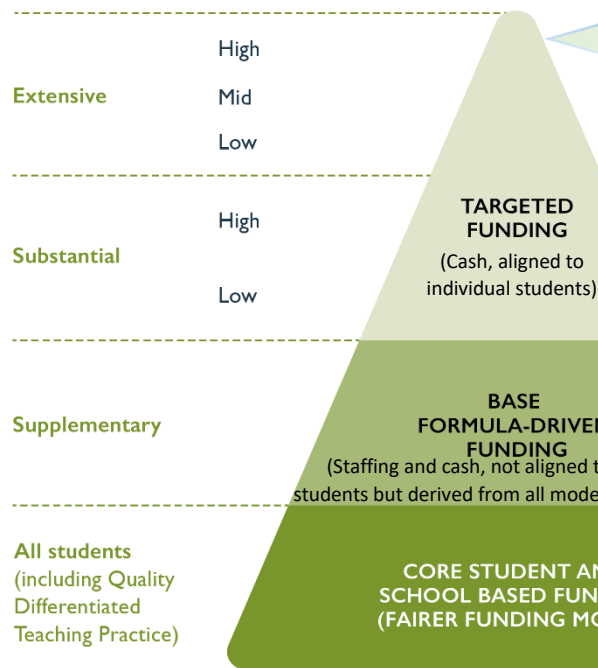


## Understanding Educational Adjustments, Disability Funding processes in our school



NCCD level of adjustment

Tasmanian Educational Adjustment Disability Funding Levels



### What happens if a student transfers schools during the school year?

**Extensive level of adjustment:** As for substantial.

**Substantial level of adjustment:** Pro rata targeted funding moves to the new school as of the date of new enrolment – this occurs automatically aligned with enrolment information in EduPoint. Support teacher staffing component stays at the school the student was Active in at first term census.

**Base funding provided for Supplementary, Substantial and Extensive levels of adjustment.** Cash and staffing both stay at the school the student was active in when SRP and staffing finalisation occurred. The receiving school needs to make appropriate educational adjustments for the remainder of the year, and will receive the formula driven funds in the following year.

For reminders for your school team regarding the Disability Standards for Education (DSE) and appropriate educational adjustments, please visit [www.nccd.edu.au](http://www.nccd.edu.au). This website now includes the e-Learning modules for the DSE and helpful resources to assist school NCCD processes.

Questions regarding student eligibility/moderation: [disabilityprograms@education.tas.gov.au](mailto:disabilityprograms@education.tas.gov.au);  
for questions relating to budgets/finances: [finsrp@education.tas.gov.au](mailto:finsrp@education.tas.gov.au)

**Contingency:** if a student enrolls from interstate or a non-Government school who meets eligibility for contingency considerations, complete a Contingency Moderation Request and send to [disabilityfunding@education.tas.gov.au](mailto:disabilityfunding@education.tas.gov.au)

EDUCATIONAL Adjustments

© SAFETY FUNDING: 10/2018 10/15/18 10/18/18