

National Quality Standard in DoE Kindergartens

The National Quality Standard (NQS) is recognised as the benchmark for quality early years' education and care service provision across Australia

The NQS is made up of seven quality areas:

Educational program and practice
Children's health and safety
Physical environment
Staffing arrangements
Relationships with children
Collaborative partnerships with families and communities
Governance and leadership

Quality Area 1: Educational program and practice

1.1 Program:

The educational program enhances each child's learning and development.
This Standard contains 3 elements that guide practice

1.2 Practice:

Educators facilitate and extend each child's learning and development.
This Standard contains 3 elements that guide practice

1.3 Assessment and Planning:

Educators and co-ordinators take a planned and reflective approach to implementing the program for each child.
This Standard contains 3 elements that guide practice

NQS in Kindergartens Reflection & Self-Assessment

Each educator critically reflects (individually/collaboratively) on programs and practice in their classroom(s) in relation to all seven quality areas. Collectively, early years' teams consider to what extent they are meeting each element for all quality areas, as well as identifying opportunities for improvement.

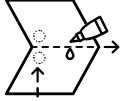
Self-Assessment guide	
Working Towards (W)	Need for improvement is identified and working on making changes to practice
Meeting (M)	All elements are evident in current practice, continuing to work on improving further

The educational program helps children to learn and develop. Educators engage children in quality learning experiences.

NQS Quality Area 1: Educational program and practice

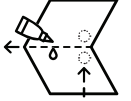


Fold and glue the back...



and hole punch either corner (optional)

Fold and glue the back...



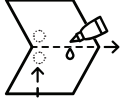
and hole punch either corner (optional)

NQS Quality Area 2: Children's health and safety

Each child's health, safety and wellbeing are prioritised and promoted.



Fold and
glue the
back...



and hole
punch
either
corner
(optional)

Quality Area 2: Children's health & safety

2.1 Health:
Each child's health and physical activity is supported and promoted.
This Standard contains 3 elements that guide practice

2.2 Safety:
Each child is protected.
This Standard contains 3 elements that guide practice

Quality Area 3: Physical environment

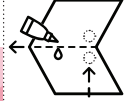
3.1 Design:

The design of the facilities is appropriate for the operation of a school.
This Standard contains 2 elements that guide practice

3.2 Use:

The school environment is inclusive, promotes competence and supports exploration and play-based learning.
This Standard contains 3 elements that guide practice

Fold and
glue the
back...



and hole
punch
either
corner
(optional)

NQS Quality Area 3: Physical environment

**Welcoming indoor
and outdoor spaces
enable children
to play, learn and
develop their
knowledge and skills.**

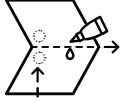


NQS Quality Area 4: Staffing arrangements

Children's learning and development is supported and enhanced by responsive and qualified educators.



Fold and glue the back...



and hole punch either corner (optional)

Quality Area 4: Staffing arrangements

4.1 Staffing arrangements:

Staffing arrangements enhance children's learning and development. *This Standard contains 2 elements that guide practice*

4.2 Professionalism:

School administrators, educators and staff are collaborative, respectful and ethical. *This Standard contains 2 elements that guide practice*

NQS Quality Area 5: Relationships with children

Positive and trusting relationships with educators help children to play, learn and develop.



Quality Area 5: Relationships with children

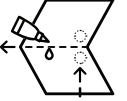
5.1 Relationships between educators and children:

Respectful and equitable relationships are maintained with each child. *This Standard contains 2 elements that guide practice*

5.2 Relationships between children:

Each child is supported to build and maintain sensitive and responsive relationships. *This Standard contains 2 elements that guide practice*

Fold and glue the back...



and hole punch either corner (optional)

NQS Quality Area 6: Collaborative partnerships with families and communities

Schools partner with families and communities to enhance children's learning and wellbeing.



Quality Area 7: Governance and leadership

7.1 Governance:

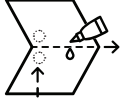
Effective governance supports the operation of a quality school.
This Standard contains 3 elements that guide practice

7.2 Leadership:

Effective leadership builds and promotes a positive organisational culture and professional learning community.
This Standard contains 3 elements that guide practice

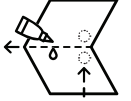
For further information on the NQS and its application in DoE Kindergartens refer to the *Guide to the National Quality Standard for Tasmanian Government Schools*, or visit: www.acecqa.gov.au/nqf/national-quality-standard

Fold and glue the back...



and hole punch either corner (optional)

Fold and glue the back...



and hole punch either corner (optional)

Quality Area 6: Collaborative partnerships with families and communities

6.1 Supportive relationships with families:

Respectful relationships with families are developed and maintained and families are supported in their parenting role.
This Standard contains 3 elements that guide practice

6.2 Collaborative partnerships:

Collaborative partnerships enhance children's inclusion, learning and wellbeing.
This Standard contains 3 elements that guide practice

NQS Quality Area 7: Governance and leadership

Effective leadership, systems and processes support a continually improving workplace and learning environment.

