



Key Word Sign™
Australia

Getting Started with Key Word Sign Basic Workshop

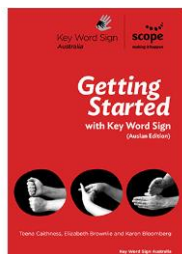
- In this introductory key word sign course, you will learn about the principles of key word sign and gesture, who it can be used with and how it can be used alongside other ways of communicating.
- You will understand how key word sign is different to Auslan, the language of the Deaf Community in Australia.
- In the practical component of the course, you will learn up to 80 new signs along with common natural gestures.
- You will have the opportunity to practice using speech and signs together in interactive activities, building your skills in a safe and fun group environment. You will leave the workshop with a detailed plan of the next steps in your key word sign journey, as well as a host of helpful resources to support your learning.

Date: Friday 13th June 2025

Venue: West Ulverstone Primary School, 34 Maud St, West Ulverstone

Cost: \$50 per person through PLI Enrolments close on 30 May 2025.

– [Enrolment Link - Getting Started with Key Word Sign Basic Workshop](#)



Time: 9.00AM start and finish by 3.00PM
Morning tea and lunch provided.