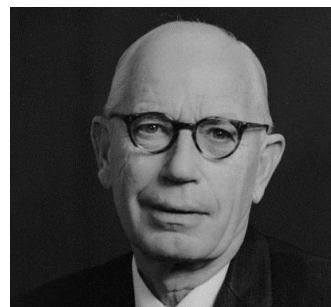


JULY 2024

Hardie Fellowship Program 2024-2025



Applicant Guideline

1 The Hardie Fellowship Trust

In 2002, the Hardie Fellowship Trust was established from a generous bequest from the estate of Professor Charles Dunn Hardie.

Professor Hardie was born in Glasgow in 1911. He attended Cambridge University where he achieved First Class Honours in Mathematics. In 1942 he published *Truth and Fallacy in Educational Theory*, a significant contribution to his profession. This was followed in 1947 by *Background to Modern Thought*, for which Albert Einstein wrote a letter to Professor Hardie, acknowledging his work.

In 1946, Professor Hardie was appointed Dean of Education at the University of Tasmania, where he served until 1976. His commitment to education and his generosity made him a much-loved part of the community.

The Hardie Fellowship Trust is administered by TPT Wealth with the trust income enabling teachers employed by the Department for Education, Children and Young People (DECYP) to pursue advanced studies or research at a university in the United States.

2 Fellowship Conditions

Fellowships are awarded to teachers as individuals and/or groups who demonstrate excellence in their practice. The study benefits recipients, learners and the education system.

2.1 Eligibility Criteria

Applicants must be :

- Citizen of Australia
- Permanent employee of DECYP, employed in accordance with the Teaching Service (Tasmanian Public Sector) Award,
- Fully registered teacher with the Teachers Registration Board Tasmania, and
- Working and available to travel in 2025

2.2 Selection Panel

Hardie Fellowships are awarded to successful applicants by a selection panel comprised of individuals in the following positions (or their delegate):

- Secretary, DECYP
- Director, People Capability and Development: DECYP
- Deputy Secretary, Schools and Early Years: DECYP
- Director, Teaching and Learning: DECYP
- Dean of Education: University of Tasmania
- DECYP teacher representative

2.3 Number of fellowships

The number of fellowships awarded each year, is determined by the annual income available for distribution from the Trust, in consultation with the Selection Panel.

2.4 Fellowship funding

Fellowship amounts vary, depending on the individual's circumstances (salary, length of study, travel destination and course) and the exchange rates. The following costs are funded by the Trust:

- Recipient salary during the fellowship
- Study/ course fees
- Economy flights - international and domestic
- Meals, incidentals and accommodation – daily allowance

The recipient salary continues to be paid fortnightly by DECYP.

The non-salary funds are paid directly to the recipient. Each recipient should seek their own independent advice as to how the non-salary component of the fellowship may impact their tax obligations.

Accommodation and living daily allowances are determined by the Trustee, however these will be foundationally based upon DECYPs Schedule of Allowances.

Travel insurance is granted through the Tasmanian Government insurance policy.

2.5 Study/ course requirements

The fellowship funds:

- Course fees for advanced studies or research at a university in the United States of America
- Short courses or conferences arranged by a USA university

In addition to university coursework, the fellowship period may include:

- School/ site visits

- Meetings or networking with researchers/ educators.

2.6 Length of fellowship

Fellowships vary in length as depend on the study plan and itinerary of the individual or group recipient. When applying, applicants can nominate a fellowship period of up to 12 weeks. Recipients must ensure that their passport is valid for at least six months beyond their travel dates and obtain the necessary Visa.

2.7 Fellowship travel period

Fellowships are for travel in the year following being awarded. The travel period will be determined by the coursework/ study plan.

3 Application Process

Applications must be submitted online via the online application accessed via the [PLI website](#) and be received, in full, by the closing date as per section 3.2 Timeline.

All applicants, whether applying as an individual or group, must submit their own application and respond to a series of questions.

Each applicant must:

- complete the online application form
- provide the name and contact details of two referees, one being your current manager
- submit a resume outlining your qualifications, accreditations and roles that are relevant to your proposed study

If the direct manager is an applicant for a group fellowship, another referee must be nominated.

Unsuccessful applicants and recipients from previous years may re-apply.

For more application information and guidance, please see the Hardie Fellowship FAQs on the [PLI website](#).

3.1 Selection Criteria

DECYPs 'why' is to create Bright lives Positive futures by ensuring every child and young person is known, safe, well and learning.

By focusing our effort on creating real change in a small number of areas, we can have the greatest impact for children and young people now.

2024/ 2025 Hardie Fellowship applicants are to align their study to one of the two DECYP focus areas:

- Lifting Literacy: Lifting Literacy - Home (sharepoint.com), or
- Student Engagement and Attendance: Student Engagement and Attendance - Learning (sharepoint.com)

Applications will be assessed according to the degree to which it demonstrates:

- A clear and compelling study focus, and rationale aligned to either the Lifting Literacy or Student Engagement and Attendance focus areas
- Understanding and insights into the current DECYP approach to these priorities, including researching the school's improvement plan or approach.
- How the study will contribute to either of the focus areas
- How the study will positively impact the applicant's personal capability
- Consideration of potential ways to share knowledge gained from the study across DECYP

3.2 Timeline

DATE	
3 July 2024	Applications open
14 August 2024, 5pm	Applications close
October 2024	Applicants notified
November 2024	Awards presentation, Hobart
2025	Fellowship travel period

4 For more information

- Read the FAQs on the [PLI website](#).
- Email People Capability and Development: pcd@decyp.tas.gov.au