



EDUCATION AND CARE

ECU NEWSLETTER

31 January 2024

Partial Assessment and Rating (reassessment) and re-rating visits update

The ECU introduced the use of partial reassessment in 2023. Partial reassessment is where some (but not all) of the seven quality areas of the NQS are considered as part of a reassessment.

A partial reassessment can lead to changes in a service's NQS rating.

There are a number of factors that influence the scheduling of partial reassessment visits, including:

- the age of the rating
- the rating held (services rated Working Toward are generally assessed more frequently)
- the accuracy of the service's rating, against current practice.

In 2023, the ECU completed 24 partial assessment and rating visits. Of these, 41 per cent resulted in an NQS rating increase, 12.5 per cent resulted in a decrease in NQS rating, and 46 per cent resulted in no change to the overall rating.

Discussing your service's readiness for a partial reassessment

You can discuss a partial reassessment with your Point of Contact (POC) Authorised Officer at any time.

You might share:

- your service's QIP and self-assessment
- your service's recent focus areas
- changes at your service
- significant events or celebrations.

This will provide the Authorised Officer with information that can inform their decision-making about which areas are most suitable for reassessment.

You may also apply for a partial reassessment and re-rating through the NQA ITS portal and nominate the quality areas or standards you would like reassessed. There is a fee payable for this option.

For further information please see the [ACECOA website](#)¹ and the [ECU Information Sheet – Partial Reassessments](#)².

Child and Youth Safe Organisations Framework – in effect 1 January 2024

Under the [Child and Youth Safe Organisations Framework](#)³, from 1 January 2024, organisations providing education and care to children and young people in Tasmania must comply with:

- The [Child and Youth Safe Standards](#)⁴, which are a list of things organisations must do to protect the wellbeing and safety of children they come into contact with.
- The [Reportable Conduct Scheme](#)⁵, which requires leaders of organisations to report concerns about conduct related to child abuse involving a worker (or volunteer) to an independent body, and conduct investigations.

In their application of the Child and Youth Safe Standards, organisations must also give effect to a [Universal Principle for Aboriginal Cultural Safety](#)⁶.

The [Independent Regulator](#)⁷, an independent regulatory body that will oversee the Framework, and make sure organisations have the support, advice, and education they need, is now in place.

You may find the below resources useful in your journey toward implementation of the Framework:

- [The Child and Youth Safe Organisations Framework Short - Information Sheet](#)⁸
- [The Child and Youth Safe Standards - Information Sheet](#)⁹
- [The Reportable Conduct Scheme - Information Sheet](#)¹⁰
- [Interim compliance guidance for organisations](#)¹¹
- [Aboriginal Cultural Safety Short Guide](#)¹²

Go to the [Office of the Independent Regulator webpage](#)¹³ to learn more. You can also email any questions to cysof@justice.tas.gov.au.

Move Well Eat Well Refresh – have your say



The *Move Well Eat Well* program is being refreshed.

If you are passionate about creating healthy, active environments for children, the Department of Health wants to hear from you.

Early childhood services are invited to take part in a range of activities to reimagine what *Move Well Eat Well* can be. Your contribution will help the program better meet the needs of educators and support positive health outcomes for Tasmanian children.

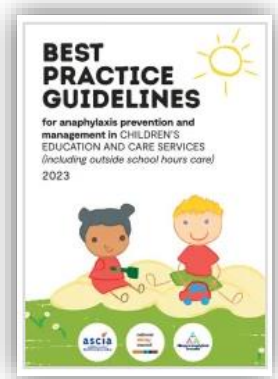
You are invited to contribute to:

- a snapshot survey on nutrition and physical activity in Tasmanian schools and services
- a conversation about nutrition and physical activity at your service
- a collaborative workshop with your sector peers about the *Move Well Eat Well* program
- an online questionnaire
- creating resources that meet your needs
- sharing a story.

For more information and to get involved visit [Move Well Eat Well Refresh Updates](#)¹⁴.

Updated best practice guidance for anaphylaxis prevention and management

The National Allergy Council has updated its [Best practice guidelines for anaphylaxis prevention and management in children's education and care](#)¹⁵ to help services prevent and manage anaphylaxis.



This includes important steps to reduce the risk of anaphylaxis along with recommendations for the following:

- allergy aware approach
- anaphylaxis management policy and plans
- allergy documentation
- emergency response
- staff training
- community and peer education
- post incident management and incident reporting.

Additional resources have also been developed and updated to help services in being 'Allergy Aware'. This includes evidence-based, best-practice resources from ASCIA and Allergy & Anaphylaxis Australia.

You can find the updated guidelines and other resources on [Allergy Aware | The National Allergy Council resource hub](#)¹⁶.

Trauma-informed practice guide – released by Alannah & Madeline Foundation

The Alannah & Madeline Foundation, in collaboration with Monash University's Health and Social Care Unit, has launched the [Trauma-Informed Practice: A Guide for Early Childhood Organisations](#)¹⁷.

The resource will guide early childhood organisations to integrate trauma-informed approaches into their operations.

Benefits of implementing trauma-informed practice in early childhood education include:

- understanding and interpreting challenging behaviours
- creating safe environments
- building trusting relationships
- promoting emotional regulation
- fostering resilience
- empowering children.

By promoting trauma-informed practices within services, this guide provides a pathway to better outcomes for children, families and the ECEC workforce.

The resource is available and free to download from [The Alannah & Madeline Foundation](#)¹⁸.

Education and Care Workforce

The ECU engages in both National and State streams of work related to supporting and building the capacity of the ECEC workforce. Our work is guided by both the National and State workforce strategies:

The Education and Care Workforce is a priority area. We will provide regular updates on projects and initiatives and opportunities for consultation.

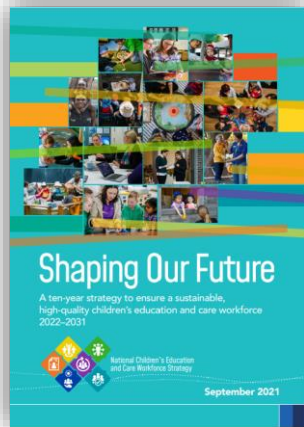
If you have any questions or comments, please get in touch.

View previous ECU Newsletters

You can access the [archive of previous ECU Newsletters](#)²¹ on the ECU website.

Contact details:

Education and Care Unit
Department for Education, Children and Young People
GPO Box 169
HOBART Tasmania 7001
Email: ecu.comment@decyp.tas.gov.au



[Shaping Our Future: A ten-year strategy to ensure a sustainable, high-quality children's education and care workforce 2022-2031 \(acecqa.gov.au\)](#)¹⁹

and

[Early Years & School Age Care Workforce Strategy Tasmania 2021 & Beyond](#)²⁰.



Links

¹ Review of ratings | ACECQA -

<https://www.acecqa.gov.au/assessment/review>

² Information Sheet – Partial reassessments | Education and Care Unit -

<https://publicdocumentcentre.education.tas.gov.au/library/Shared%20Documents/ECU-Information-Sheet-Partial-reassessments.pdf>

³ The Child and Youth Safe Organisations Framework | Office of the Independent Regulator (OIR) -

<https://www.oir.tas.gov.au/about/the-child-and-youth-safe-organisations-framework>

⁴ Child and Youth Safe Standards | OIR

<https://www.oir.tas.gov.au/about/child-and-youth-safe-standards>

⁵ Reportable Conduct Scheme | OIR -

<https://www.oir.tas.gov.au/organisations/reportable-conduct-scheme>

⁶ Aboriginal Cultural Safety | OIR -

<https://www.oir.tas.gov.au/about/universal-principle-for-aboriginal-cultural-safety>

⁷ Office of the Independent Regulator - <https://www.oir.tas.gov.au/>

⁸ Information Sheet | Department of Justice -

https://www.justice.tas.gov.au/_data/assets/pdf_file/0003/711849/information-sheet-Framework-overview-July-2023.pdf

⁹ Information Sheet | Department of Justice -

https://www.justice.tas.gov.au/_data/assets/pdf_file/0004/711850/information-sheet-The-Child-and-Youth-Safe-Standards-July-2023.pdf

¹⁰ Information Sheet | Department of Justice -

https://www.justice.tas.gov.au/_data/assets/pdf_file/0006/711852/information-sheet-The-Reportable-Conduct-Scheme-July-2023.pdf

¹¹ Interim compliance guidance for organisations | Department of Justice -

https://www.justice.tas.gov.au/_data/assets/pdf_file/0020/731270/interim-Compliance-Guidance-for-Organisations-October-2023.pdf

¹² Aboriginal Cultural Safety Short Guide | Department of Justice - https://www.justice.tas.gov.au/_data/assets/pdf_file/0007/738403/Aboriginal-Cultural-Safety-Short-Guide.pdf

¹³ OIR - <https://www.oir.tas.gov.au/>

¹⁴ *Move Well Eat Well* Refresh Update | Department of Health - https://www.movewelleatwell.tas.gov.au/move_well_eat_well_refresh_updates

¹⁵ The National Allergy Council [Best practice guidelines for anaphylaxis prevention and management in Children's Education and Care - Allergy Aware](#)

¹⁶ Allergy Aware | The National Allergy Council resource hub - <https://www.allergyaware.org.au/>

¹⁷ Trauma Informed Practice | Alannah & Madeline Foundation - <https://www.alannahandmadeline.org.au/what-we-do/care-programs/tracs/trauma-informed-practice-a-guide-for-early-childhood-organisations>

¹⁸ Trauma Informed Practice | Alannah & Madeline Foundation - <https://www.alannahandmadeline.org.au/what-we-do/care-programs/tracs/trauma-informed-practice-a-guide-for-early-childhood-organisations>

¹⁹ [Shaping Our Future: A ten-year strategy to ensure a sustainable, high-quality children's education and care workforce 2022–2031](#) (acecqa.gov.au)

²⁰ [Early Years & School Age Care Workforce Strategy Tasmania 2021 & Beyond](#)

²¹ Newsletters Archive | ECU -

<https://educationandcare.tas.gov.au/news/newsletters-archive/>