

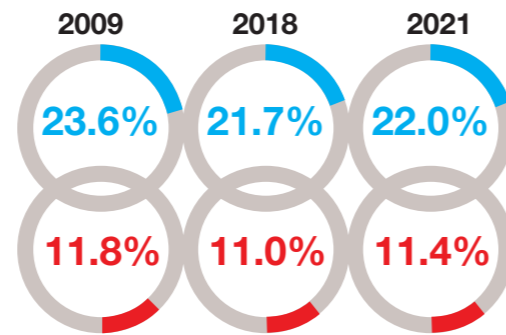
## ABOUT THE AEDC. The AEDC is Australia's national progress measure of children's early development



**1,467,091** children have been included over five data collections (2009, 2012, 2015, 2018, 2021)

**305,015** children were included in the 2021 data collection

That's **95.5%** of children who started school in 2021



of children were developmentally vulnerable in **at least one** area of their development in 2021

of children were developmentally vulnerable in **two or more** areas of their development in 2021

There has been a significant increase in vulnerability since 2018 but a significant decrease in vulnerability overall since 2009

**On Track on 5 domains (OT5)**, over five data collections, **improvement of 4.1% nationally** with the gap closing for some children but widening for others:

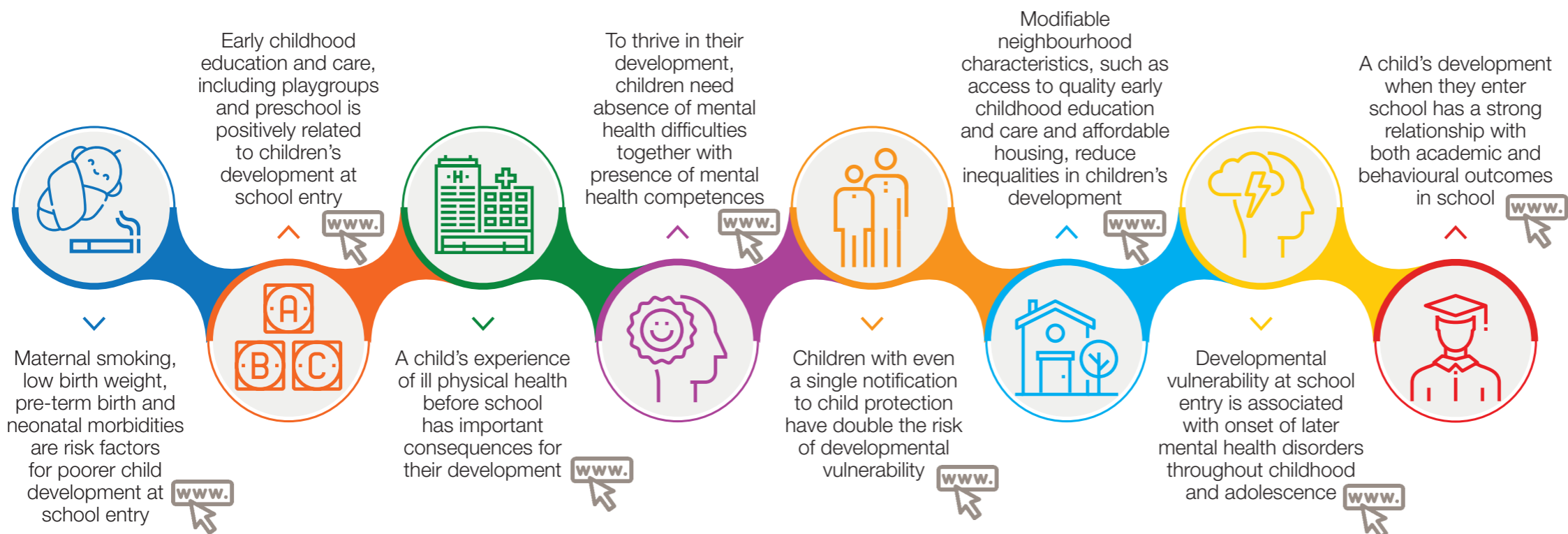
For Aboriginal & Torres Strait Islander children, **improvement of 8%**

For children in remote/very remote areas, **improvement of 7.1%**

For the most disadvantaged children, **decline of 1.1%**

For children with non-English language background, **improvement of 8.2%**

## WHAT HAVE WE LEARNED?



## RELEVANT FACTS

**1 in 4** children notified to child protection before age 10

**1 in 10** women smoke in pregnancy

**22** per cent of children live in households with housing stress

**92.3%** of children attended a preschool program

**1 in 7** children living in socio-economically disadvantaged communities attend playgroup compared with **1 in 4** children living in advantaged communities

## WHAT ARE THE KEY GAPS?

