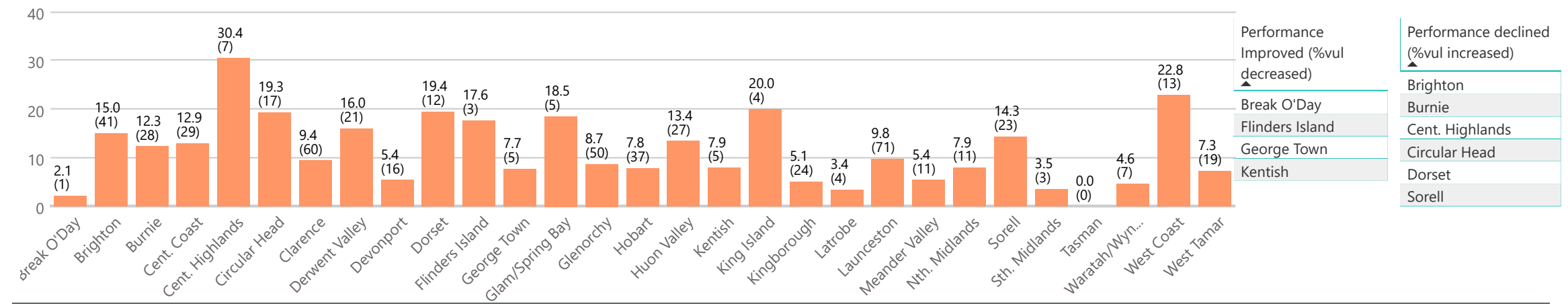


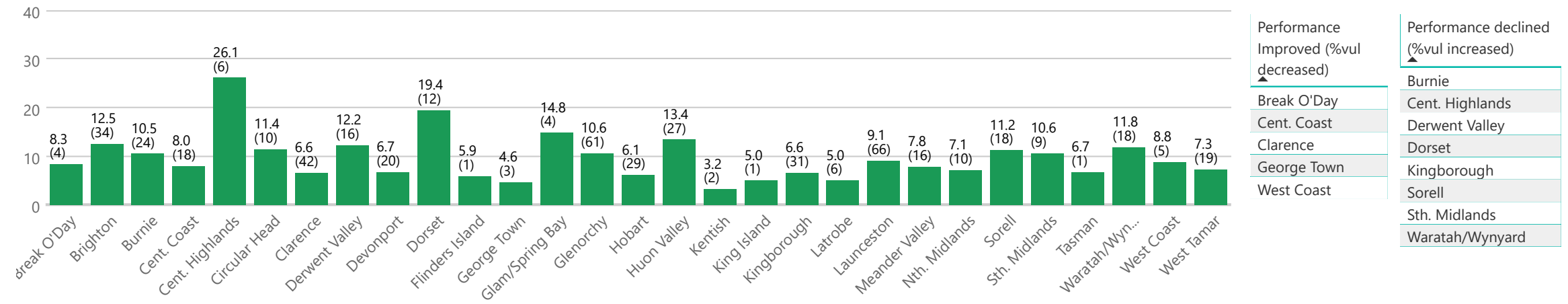
AEDC 2018 Developmental Vulnerability Percentage and Count by Community

Communities significantly changed since 2015

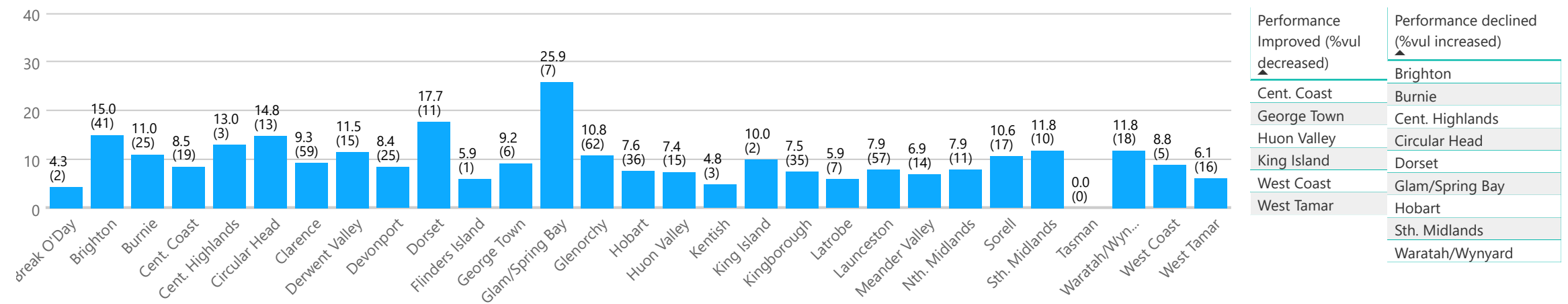
Physical health and well being - 2018 %Vul(Count) by Community



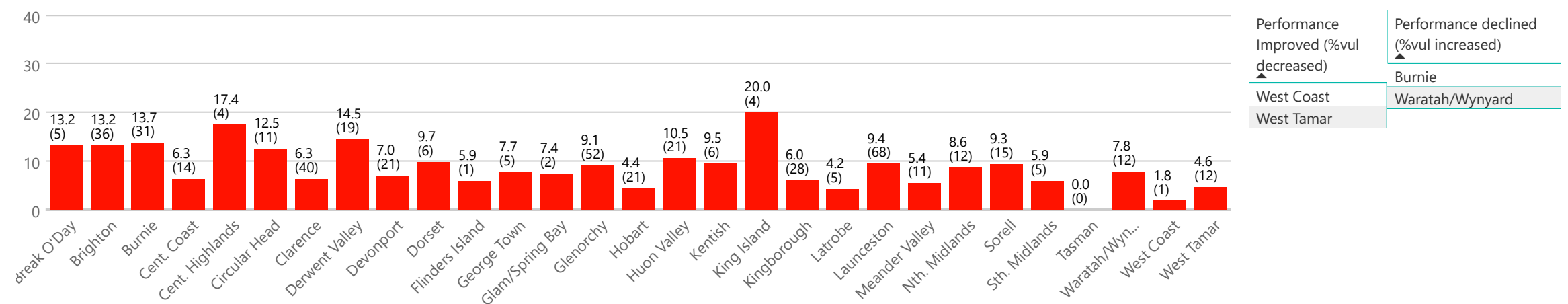
Social competence - 2018 %Vul(Count) by Community



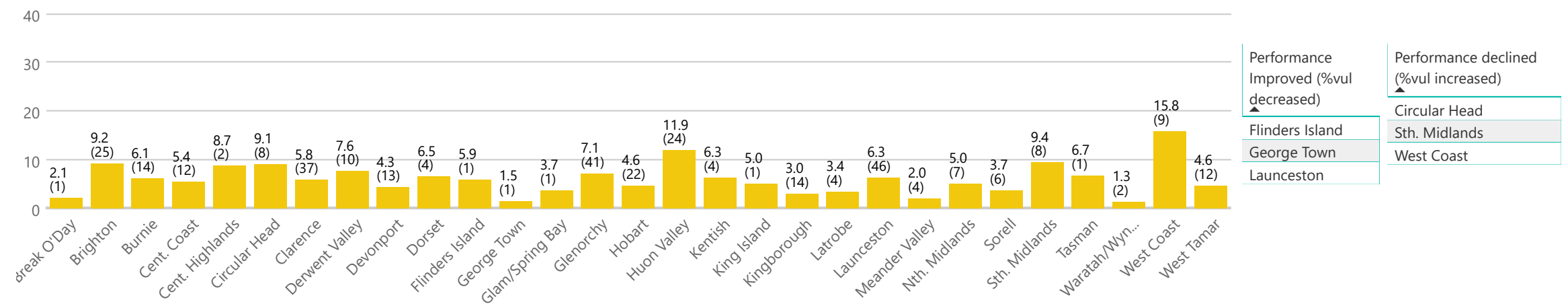
Emotional maturity - 2018 %Vul(Count) by Community



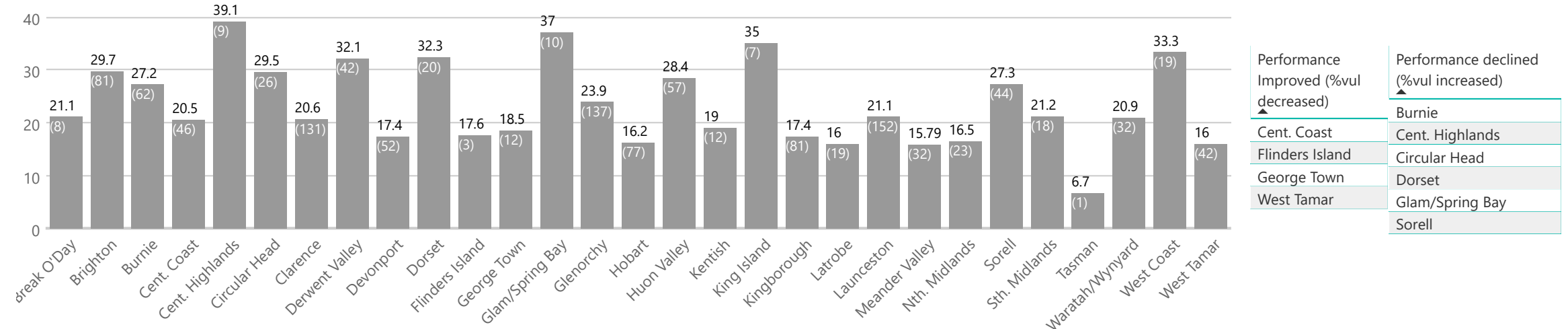
Language and cognitive skills - 2018 %Vul(Count) by Community

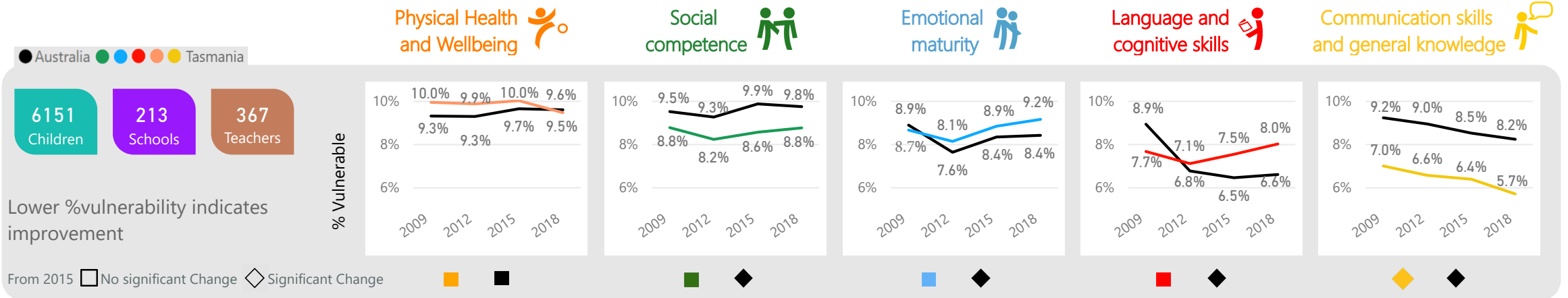


Communication skills and general knowledge - 2018 %Vul(Count) by Community



DV1 - 2018 %Vul(Count) by Community





Key Comments

DV1 & DV2

- Tasmanian children started stronger than Australian children
- The gap is closing

- Gap to Australia has narrowed
- Tasmania is better than Australia for the first time

- Tasmania is consistently better than Australia

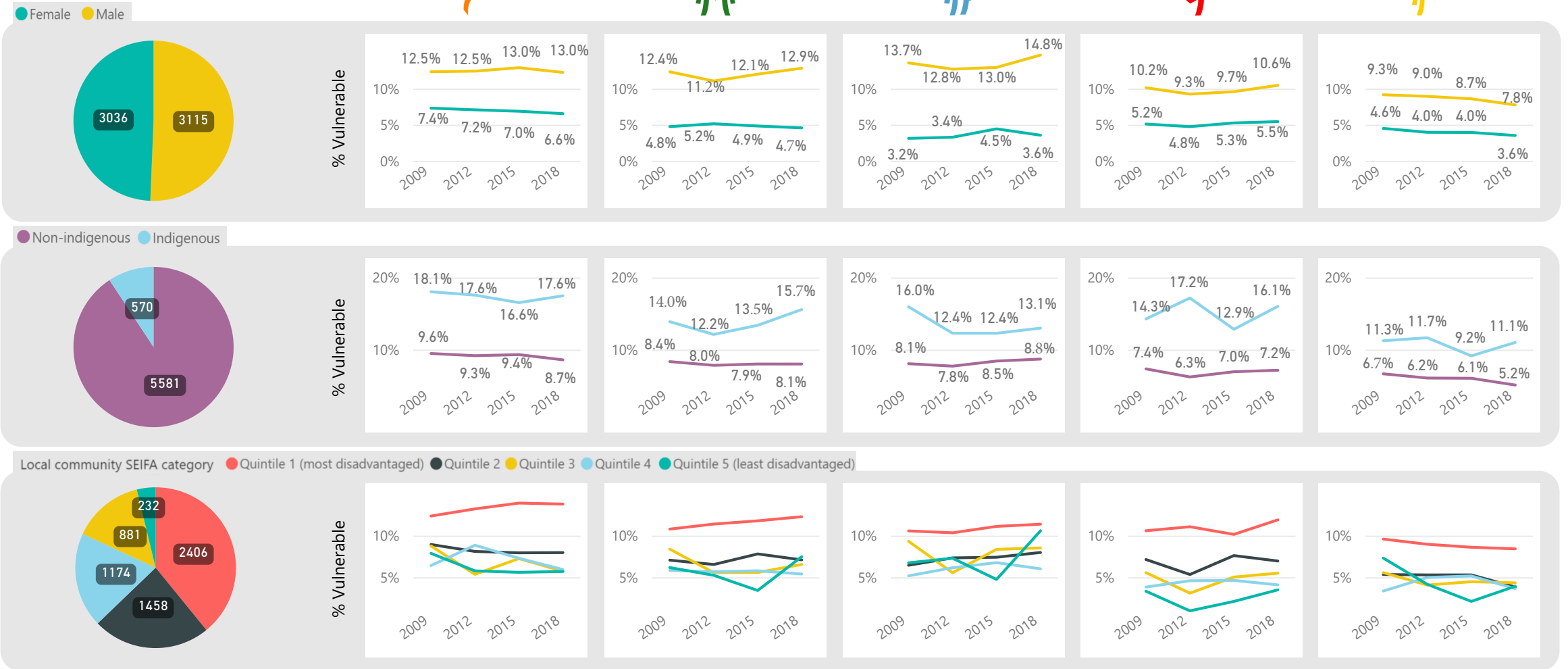
- Tasmania is more developmentally vulnerable than Australia since 2012

- Vul% is increasing and gap to Australia is widening

- The trend is improving for both Tasmania and Australia

*DV1: Developmentally vulnerable on 1 or more domain/s DV2: Developmentally vulnerable on 2 or more domain/s

Who we are



Successes and Challenges

